

54th World Congress of Chess Composition
Jesi, Italy, 20 - 27 August 2011

11th Japanese Sake / 3rd Brazilian Cachaça Tourney

Theme: SS #(=) n presenting **Reversible Promotion**. Neither fairy pieces nor other fairy conditions are allowed except for Maximummer.

Closing Date:

August, 24th
(Wednesday) - 9 p.m.

E-mail entries must be sent to Tadashi

Wakashima (tadashi@hcn.zaq.ne.jp)

before August 13th (Saturday).

Judges:

Tadashi Wakashima
and Almiro Zarur

Prizes: Bottles of Sake and Cachaça.

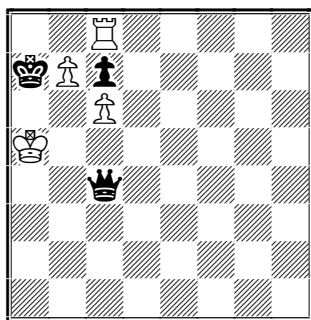
The tourney is open to everybody, but only congress participants will receive the bottles.

Definition – This fairy condition created by Almiro Zarur determines that a promoted (white / black) piece turns back to a (white / black) pawn when it moves to the second (if white) or seventh rank (if black). When turning back to a pawn, obviously the piece loses all its previous powers, like checking, guarding and so on, and it regains the power and characteristics of a pawn.

In case the promoted piece is already in the diagram position, this must be indicated below the diagram, together with the indication of the fairy condition. Considering that fairy pieces are promoted pawns, they also are demoted to pawns when moving to the second (if white) or seventh rank (if black) – not allowed in this specific tourney.

Article – An article by Almiro Zarur possibly presenting other examples shall soon be published by Tadashi Wakashima in *Problem Paradise*, together with the award of this tourney.

I – Almiro Zarur



1.b8=T 2.Tb2=P 3.b4

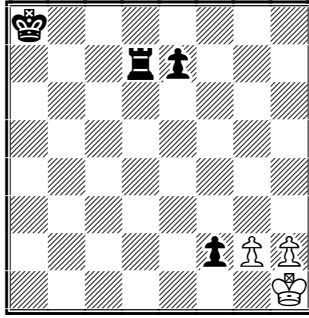
4.b5 5.b6+ cxb6 #

The promoted rook is demoted to a pawn
to force the mate with check.

SS # 5

Reversible Promotion

II – Almiro Zarur



SS # 7 Maximummer b) bKa8 – b8
Reversible Promotion

a) 1.g4?

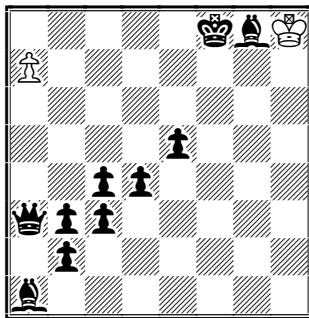
1.h4 5.h8=L 6.Le5 7.Lh2=P Td1 #

b) 1.h4 ?

1.g4 5.g8=L 6.Ld5 7.Lg2=P Td1 #

A White tempo move, if any, would be enough for Black to mate. Therefore White must decide which pawn is to be promoted to a bishop so as to avoid check to the bK and to achieve again the diagram position, but this time Black is supposed to move.

III – Almiro Zarur



SS # 16 Maximummer
Reversible Promotion

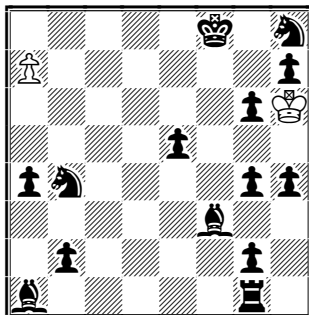
1.a8=S 3.Sa4 4.Sxb2=P

5.bxa3 10.a8=S 12.Sa4 13.Sb2=P

14.bxc3 15.cxd4 16.dxe5 Lxe5 #

Minimal with two promotions at a8 and two demotions at b2, and the promoted wS presenting twice the way back from promotion to demotion.

IV – Almiro Zarur



SS # 21 Maximummer
Reversible promotion

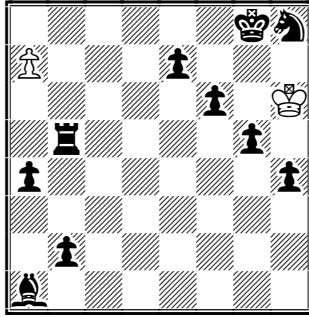
1.a8=S 3.Sc4 4.Sxb2=P 5.b3 6.bxa4 10.a8=S

12.Sc4 13.Sxe5 14.Sxg4 15.Se3 16.Sxg2=P

17.g3 18.gxh4 19.h5 20.hxg6 21.gxh7 Lg7 #

A presentation very close to the previous one until the 12th move, when the promoted wS moves to the right side of the board and then it shows a symmetrical third demotion at g2 and (almost) symmetrical moves by the demoted wP until h7 (the symmetrical square of its initial square – a7), just after capturing the eighth bP.

V – Almiro Zarur

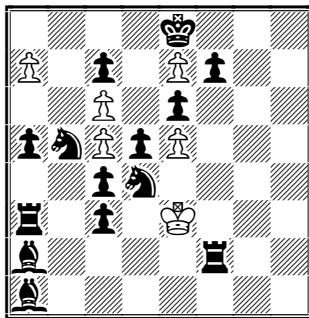


SS # 16 Maximummer
Reversible Promotion

- 1.a8=S 3.Sa4 4.Sxb2=P
- 5.b3 6.bxa4 10.a8=L
- 11.Lg2=P 12.g3 13.gxh4
- 14.hxg5 15.gxf6 16.fxe7 Lg7 #

Promotions to wS and wL at the same square a8,
and respective demotions at the symmetrical
squares b2 and g2.

VI – Almiro Zarur

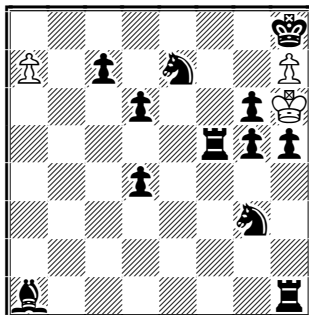


SS # 23 Maximummer
Reversible Promotion

- 1.a8=S 3.Sa4 4.Sb2=P 5.b4 6.bxa5
- 9.a8=S 11.Sa4 12.Sb2=P 13.bxa3 18.a8=S
- 20.Sa4 21.Sb2=P 22.bxc3 23.cxd4 Lxd4 #

Three promotions at a8 and three demotions at b2,
and the promoted wS presenting thrice the way back
from promotion to demotion.

VII – Almiro Zarur



SS # 25
Reversible Promotion

- 1.a8=L 2.Lxh1 3.Lf3 4.Lxh5
- 5.Le2=P 6.e4 8.exd6 9.exc7 10.c8=L
- 11.La6 12.Le2=P 14.exd4 18.d8=L
- 19.Lb6 20.Lg1 21.Lh2=P 22.h4
- 23.h5 24.hxg6 25.g7+ Lxg7 #

Here a wL is the piece that is involved
in the promotions / demotions.